

# Martin Yale

# 6375 Burster

Thank you for selecting a Martin Yale 6375 Burster. It is designed for easy setup and operation. However, we strongly suggest you carefully read these operating instructions before starting the machine. Familiarize yourself with all the functions, safety precautions, and adjustments described in the manual.

The 6375 Burster will separate and trim continuous forms up to six ply. Allow yourself a few minutes to read the following instructions and familiarize yourself with the machine.



## 1.0 SPECIFICATIONS

Form Width.....	up to 16" Wide (406.40mm)
Form Length.....	from 2-5/8" to 12 Long (66.67mm to 304.8mm)
Paper Weight.....	10 to 120 lb. (5 to 55kg)
Speed.....	Variable 75 to 250 feet per minute (23 to 76 meters per minute)
Trim Width.....	Up to 1 inch (25.4mm)
Electrical.....	115 Volts AC, 60 Hertz, 8 Amps 220 Volts available
Dimensions.....	Operating Length (w/stacker) 52" (1321mm) Width 26-1/4" (667mm) Height 39" (991mm)
Weight.....	275 lbs. (125kg)

## Table of Contents

1.0 Introduction & Specifications . . . . .	Page 1
2.0 Installation . . . . .	Page 2
3.0 Stacker Assembly . . . . .	Page 2
4.0 Form Length Adjustment . . . . .	Page 2
5.0 Form Width Adjustment . . . . .	Page 3
6.0 Operation . . . . .	Page 3
7.0 Troubleshooting . . . . .	Page 4
8.0 Maintenance . . . . .	Page 4
9.0 Wiring Diagram . . . . .	Page 4

## 2.0 Installation

- 2.1 Remove all of the tape from the lid and slitter assemblies. Remove the brown adhesive material from the lid of the unit.
- 2.2 Remove all of the plastic straps. **NOTE: The two straps holding the stacker assembly in place have tension slips and do not need to be cut to remove.**
- 2.3 Remove the four bolts/washers from the corners of the unit. Remove the 2X4 planks from the legs of the unit and set them to the side. **NOTE: It is recommended to save all packing material should you need to reship the machine.**
- 2.4 With one person on each side, lift the unit off of the skid. **NOTE: Take the machine weight of approximately 275 lbs. into consideration when removing the machine from the skid without the aide of equipment to prevent personal injury.**
- 2.5 Set the unit at the appropriate location.

## 3.0 Stacker Assembly

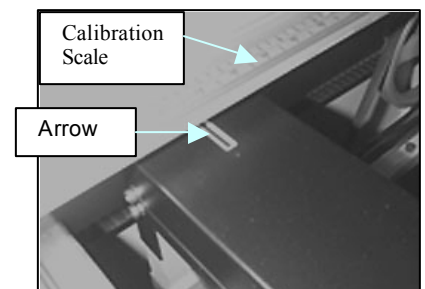
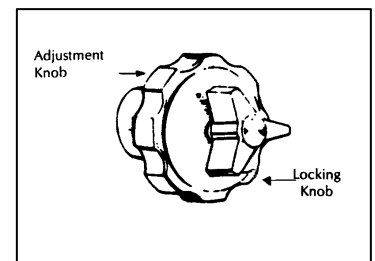
- 3.1 Remove the stacker assembly from the carton. **NOTE: The stacker assembly is heavier on one end than the other. Be careful to not lose control of the component when installing/removing from the unit.** Hang the stacker assembly on to the exit side of the unit. **NOTE: There are three plastic strips on the bottom of the exit side. When installing the stacker, ensure they are above the stacker table. These serve as a bridge for the media to come across.**



- 3.2 Plug the Stacker into the machine outlet directly below the Stacker. Plug in the units main power supply into the wall outlet. Press the momentary stacker button and make sure there is power to the assembly. Press the start button to verify power to the main unit. **NOTE: Safety Interlock Switches stop the Burster when the Top Cover is open. The Top Cover must be closed, even with the ends of the machine in order for the unit to start.**
- 3.3 Install both sets of Stacking Rollers onto the Stacker. The Stacking Wheels with white nylon rollers at each end go into the trench directly ahead of the Stacking Rack.
- 3.4 Install the Stacking Rack into the accommodating slot at the end of the Stacker Assembly.

## 4.0 Form Length Adjustment

- 4.1 To set the bursting length, loosen the outer Locking Knob on the Length Adjustment Knob until it turns freely (**See Diagram**). Turn the Adjusting Knob until the arrow on the roller cover aligns to the length desired on the Calibration Scale and tighten the Locking Knob back down firmly (**See Picture at 4.3**).
- 4.2 The Stacker Mylar Tapes guide the leading edge of the paper down to the Stacker Belts. Grasping the white Mylar Tape Clips, rotate the clips up or down. The operating principle is **down** for short forms, **up** for long forms. The Mylar Tapes should be set between the rollers not on the belts. **NOTE: The media should be centered on the Mylar Straps to avoid the media freeing itself from one side and causing the machine to jam. Also, arrange the Mylar deflector so that they will provide the proper angle of feed into the conveyer.**
- 4.3 The Stacking wheels should be positioned for the length of the form being burst using the Calibration Scale (**See Picture**).



## 5.0 Form Width Adjustment

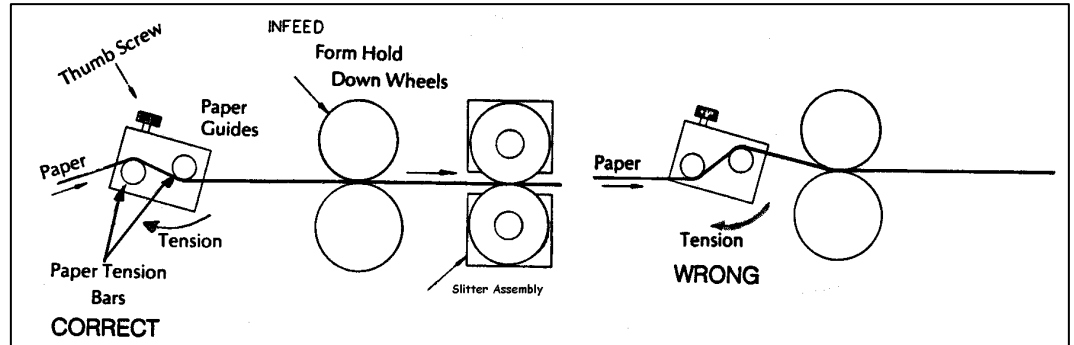
### 5.1 Tension Bars

**5.1.1** Position the forms to be processed in front of the Burster on the floor or on the optional in feed table. Loosen the thumbscrews on the Paper Guides located on the Paper Tension Bars. Slide the guides out of the way to the ends of each side of the Tension Bars.

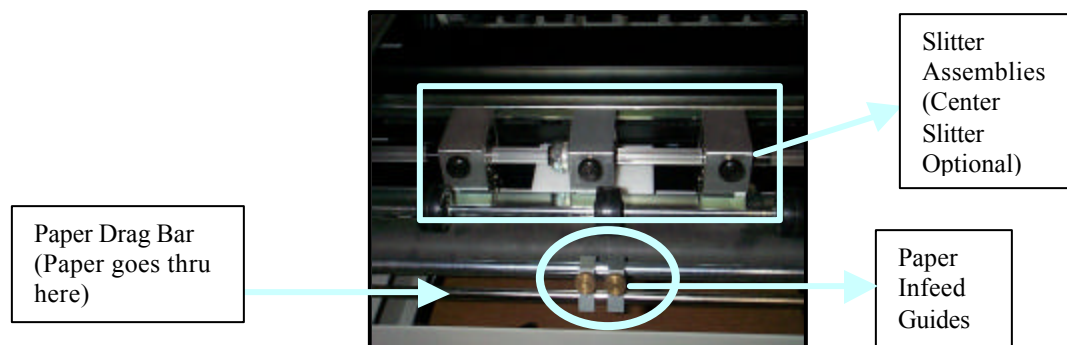
**5.1.2** Open the Tension Bars by swinging the movable bar down. Position the tension bar for moderate drag as document feeds. Feed the form between the Tension Bars

(See Diagram).

**5.1.3** Position the Paper Guides so the greatest numbers of Mylar Straps are used to support the paper through the machine.



Take into consideration the trimmed width of the form. The edges of the paper should not run directly on the edges of the Mylar Straps. Move the In Feed Guides against the form and lock the Thumbscrews. Do not leave any space between the margins of the form and the Paper Guides.



### 5.2 Slitter Assembly

**5.2.1** To Slit and Burst simultaneously, slide the Slitter assemblies in to align the blades to cut just inside the perforation. This will give a cleaner edge than cutting on the perforations. Be sure to tighten the thumbscrews so the slitters will not move.

**5.2.2** To Burst without Slitting, you will need to move the slitters to the side away from the paper path. If your unit has an optional center slitter, simply loosen the setscrew and position the blades to where they are not touching and tighten the setscrew back in place.

**5.2.3** Using the Paper Feed Knob, feed one form into the Burster, so that one sheet is into the first Bursting Roller. Swing the lower Tension Bar up, which will provide a drag on the form and the Infeed Guides.

**Note: Forms feed between the tension bars. If the forms move or jam while slitting, there may be space between the form and the Infeed Guides. Adjust the Tension Bars to provide more drag, (See Diagram).**

## 6.0 Operation

- 6.1** Close the Top Plexiglas Cover to engage the Safety Interlock switches or the machine will not start. The Top Cover must be even with the end of the machine.
- 6.2** Press the green Start Switch. Turn the Speed Control Knob clockwise, starting at low speed. Lighter paper may require lower speed.
- 6.3** To stop the unit from operation, press the red Stop Switch or slid open the Top Cover from either end.
- 6.4** The Stacker Switch will clear the conveyor of forms.

**NOTE: If the last form remains between the rollers, leave the Burster running and shorten the Bursting Roller length setting, ejecting the last form. Then re-set the length using the Length Adjusting Knob.**

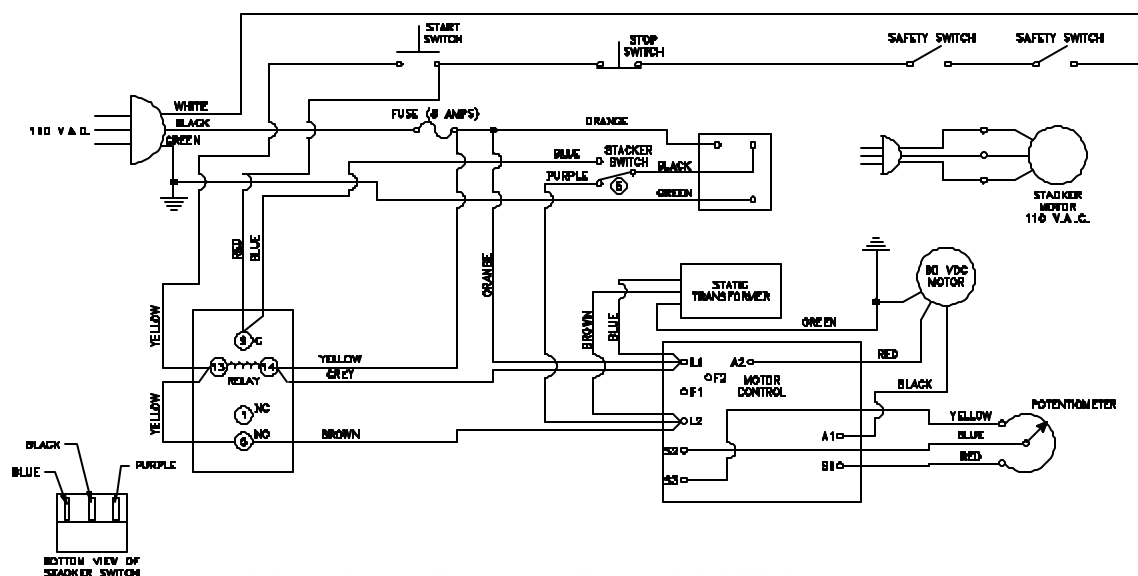
## 7.0 Troubleshooting

Symptom	Probable Cause
Inaccurate Trimming	Paper Guides & Tension Bar used improperly. (See Section 4.0).
Forms Not Bursting	<b>NOTE: Set Bursting Roller Length <math>\frac{1}{4}</math>" to <math>\frac{3}{4}</math>" Shorter than actual form length.</b> 1. Verify roller timing & pressure and form length setting. 2. Forms with tight perforations could cause double un-burst forms to exit the machine. Forms with perforations that are not deep enough for bursting or perforations that are not pre-folded.
Burster won't start	1. Close the Top Cover 2. Top Cover loose in track; causing micro switches not to close. Adjust by loosening one end of the bar and squeezing the top of the machine in or out for proper top cover fit. 3. Check power outlet and fuse. Replace fuse with 8amp, if defective.
Stacker won't run	1. Verify power cord is plugged into burster 2. Verify the fuse in burster 3. Verify Top Cover is closed properly. 4. If the motor runs slow, check for low voltage of power supply. If circuit is overloaded with other machines, this can cause a voltage drop.
Jamming	1. Stacker Rollers or Mylar Tapes set improperly. (Refer to Section 2.0 & 3.0 for reference). 2. Speed too high for paper weight 3. Insufficient blade tension or dull blades
Problems unsolved by this guide	Call Technical Support Department of Martin Yale Industries, Inc. at (260) 563-0641 for technical support for the lifetime of the machine.

## 8.0 Maintenance (Disconnect all power prior to servicing)

- 8.1 Paper dust should be vacuumed out of the burster periodically. Using a small soft brush, such as a typewriter brush, brush the dust out of the static eliminator bar located at the burster out-feed end. Wipe the Plexiglas safety cover and painted surfaces with mild detergent or glass cleaner. **NOTE: Do not use an abrasive cleaner on the cleaner on the clear Plexiglas cover, as it will cloud the glass.**
- 8.2 The only parts of the 6375 Burster that require lubrication are the rack and pinion gear. Clean all paper dust off of the racks and gears, and only apply a dry lubrication. **Caution: Do not get lubrication on the bursting rollers and Mylar tapes. Do not use a wet lubricant, such as grease, as this will attract paper dust.**
- 8.3 Use denatured alcohol to remove the carbon build-up on the Bursting Rollers.

## 9.0 WIRING DIAGRAM



251 Wedcor Ave · Wabash, IN 46992  
 Phone (260) 563-0641 · Fax (260) 563-4575  
 Website: [www.martinyale.com](http://www.martinyale.com) · Email: [info@martinyale.com](mailto:info@martinyale.com)

**EXPLODED VIEWS  
AND PARTS LIST ARE  
NOT INCLUDED IN  
THIS MANUAL AND  
NEED REVISION  
BEFORE BEING  
INCLUDED**